

WATER ACTIVATED DILUTION DRAIN VALVE

- ◆ REQUIRES ONLY 30 PSI OF WATER TO OPERATE
- ◆ FAILSAFE DESIGN CLOSSES VALVE AUTOMATICALLY WHEN WATER PRESSURE IS DEACTIVATED
- ◆ ELIMINATES NEED FOR DIRECT OPERATOR INTERFACE WHILE DRAINING TANK
- ◆ COOLS AND DILUTES WHILE DRAINING
- ◆ MULTIPLE DRAIN RATIOS AVAILABLE

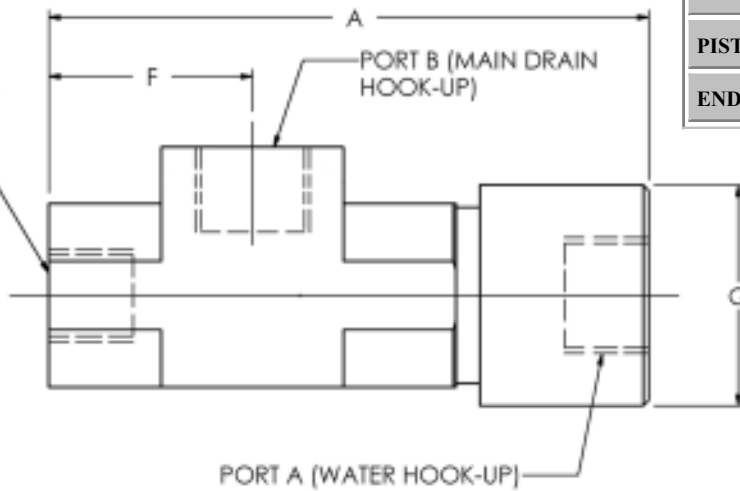
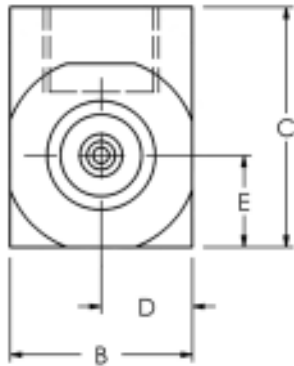


SPECIFICATIONS

Size	1/2"	3/4"
Dilution Ratio*	2:1 6:1 10:1 20:1	2:1 6:1 10:1 20:1
Vacuum Rating – Min/Max inches of Hg	21/27	21/27
City Water Pressure – Min/Max PSIG (kPa)	30/60 (207/414)	30/60 (207/414)
Max Temperature – Media °F (°C)	302 (150)	302 (150)
Max Temperature – Ambient °F (°C)	212 (100)	212 (100)

* (1) Higher ratios cause slower drain.
(2) User must be cautious of potential chemical reactions.

PORT C
(DISCHARGE HOOK-UP)



BODY	PTFE
PISTON	PTFE
END CAP	PVDF

SIZE	A	B	C	D	E	F	G	PORT A	PORT B	PORT C
1/2"	5.32	1.62	2.12	0.81	0.81	1.81	1.95	3/8 FNPT	1/2 FNPT	1/2 FNPT
3/4"	5.32	1.62	2.12	0.81	0.81	1.81	1.95	3/8 FNPT	3/4 FNPT	1/2 FNPT

Specifications subject to change without notice.

All dimensions are in inches.

ORDERING INFORMATION

WDV X X P TFE X XXX

OPTIONS: ### - Non-Standard Options (Consult Factory)

SEALS:
 V - Viton®
 E - Ethylene Propylene
 K - Kalrez®

BODY MATERIAL: PTFE

CONNECTION: FNPT

SIZE:
 08 - 1/2"
 12 - 3/4"

DRAIN RATIO:
 02 - 2:1 06 - 6:1
 10 - 10:1 20 - 20:1

WATER ACTIVATED DILUTION DRAIN VALVE SERIES

® Viton and Kalrez are registered trademarks of the Dupont Corporation.

LS-DWDV01-01

DYTEC
CORPORATION

102 Compass Point Dr., Suite D
 St. Charles, MO 63301
 636-949-5600 Fax: 636-724-2492
 www.dytec.com