

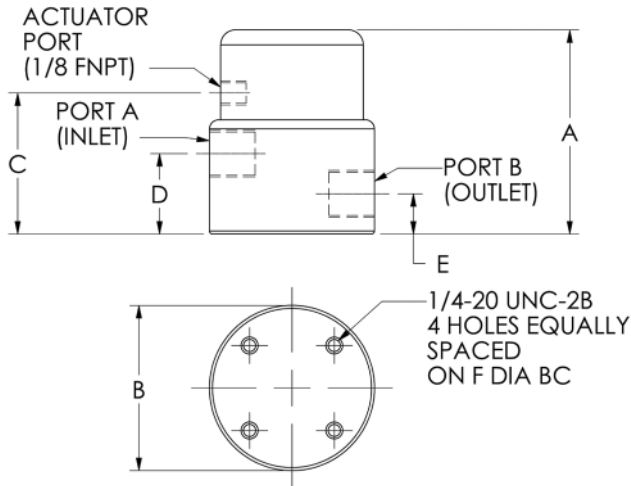
### MULTI-PURPOSE PNEUMATIC VALVE

- ◆ ONE PIECE BODY
- ◆ CORROSION RESISTANT
- ◆ NO LUBRICANTS OR METAL IN FLUID PATH
- ◆ EXCELLENT DI WATER VALVE
- ◆ HIGH FLOW CAPACITY
- ◆ IDEAL FOR WET BENCH APPLICATION
- ◆ “MICRO ADJUST” BYPASS OPTION



### SPECIFICATIONS

Size		3/8" Orifice	1/2" Orifice	3/4" Orifice	1" Orifice
Cv		2.1	2.8	7.5	13.5
Max Pressure –	Media (Port A) PSIG (kPa)	75 (517)	75 (517)	60 (414)	60 (414)
Max Pressure –	Media (Port B) PSIG (kPa)	45 (310)	45 (310)	10 (69)	10 (69)
Actuator Pressure –	Min/Max PSIG (kPa)	40/80 (276/552)	40/80 (276/552)	40/80 (276/552)	40/80 (276/552)
Max Temperature –	Media °F (°C)				
	PVC	140 (60)	140 (60)	140 (60)	140 (60)
	POLYPROPYLENE	160 (71)	160 (71)	160 (71)	160 (71)
	PVDF	212 (100)	212 (100)	212 (100)	212 (100)
	PTFE	350 (177)	350 (177)	350 (177)	350 (177)
Max Temperature –	Ambient °F(°C)	140 (60)	140 (60)	120 (49)	120 (49)



<b>BODY</b>	PVC	POLY	PVDF	PTFE
<b>BELLOWS</b>	PTFE		PTFE	
<b>BACKING PLATE</b>	PTFE		PTFE	
<b>PISTON</b>	POLYPROPYLENE		PVDF	PVDF
<b>END CAP</b>	POLYPROPYLENE		PVDF	
<b>SPRING</b>	302 SS		302 SS TEFLON® COATED	

SIZE	A	B	C	D	E	F	PORT A	PORT B
3/8"	3.40	2.75	2.35	1.34	0.65	2.00	3/8 FNPT	3/8 FNPT
1/2"	3.40	2.75	2.35	1.34	0.65	2.00	1/2 FNPT	1/2 FNPT
3/4"	4.85	4.00	3.47	2.16	1.00	3.00	3/4 FNPT	3/4 FNPT
1"	4.85	4.00	3.47	2.16	1.00	3.00	1 FNPT	1 FNPT

Specifications subject to change without notice.

All dimensions are in inches.

## ORDERING INFORMATION

MPV	2	X	X	P	XXX	X	XXX
-----	---	---	---	---	-----	---	-----

**OPTIONS:** MA - Micro Adjust RC - Restricted Close  
 RO - Restricted Open RB - Restricted Both  
 ### - Non-Standard Options (Consult Factory)

**SEALS:** V - Viton®  
 E - Ethylene Propylene  
 K - Kalrez®

**BODY MATERIAL:** PVC - PVC  
 POL - Polypropylene  
 PVD - PVDF  
 TFE - PTFE

**CONNECTION:** FNPT

**ORIFICE & PORT:** 6 - 3/8" 8 - 1/2"  
 12 - 3/4" 16 - 1"

**VALVE CONFIGURATION:**  
 C - Normally Closed  
 O - Normally Open

2 WAY

MULTI-PURPOSE PNEUMATIC VALVE SERIES

® Teflon, Viton and Kalrez are registered trademarks of the Dupont Corporation.

LS-DMPV01-01

**DYTEC**  
 CORPORATION

102 Compass Point Dr., Suite D  
 St. Charles, MO 63301  
 636-949-5600 Fax: 636-724-2492  
 www.dytec.com