

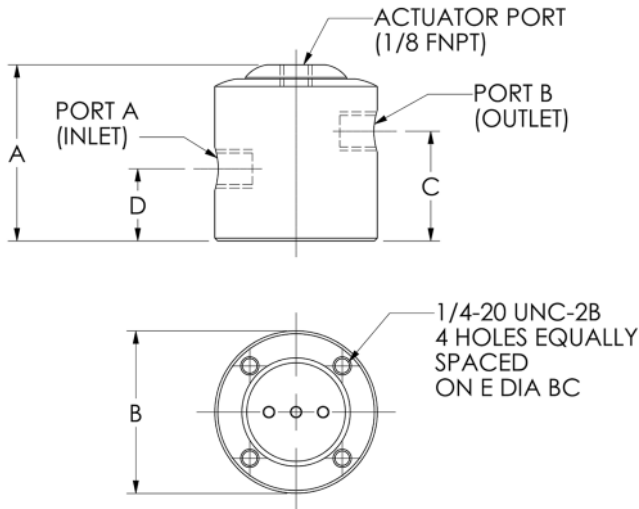
GENERAL PURPOSE PNEUMATIC VALVE

- ◆ ONE PIECE BODY
- ◆ CORROSION RESISTANT
- ◆ SPRING RETURN STANDARD
- ◆ IDEAL FOR WET BENCH APPLICATION
- ◆ DI WATER VALVE
- ◆ AVAILABLE IN VARIOUS MATERIALS TO MEET APPLICATION REQUIREMENTS



SPECIFICATIONS

Size		1/4" Orifice	1/2" Orifice	3/4" Orifice	1" Orifice
Cv		0.8	2.8	7.5	13.5
Max Pressure –	Media (Port A) PSIG (kPa)	80 (552)	80 (552)	60 (414)	60 (414)
Actuator Pressure –	Min/Max PSIG (kPa)	35/70 (241/483)	35/70 (241/483)	35/70 (241/483)	35/70 (241/483)
Max Temperature –	Media °F (°C)				
	PVC	140 (60)	140 (60)	140 (60)	140 (60)
	POLYPROPYLENE	160 (71)	160 (71)	160 (71)	160 (71)
	PVDF	212 (100)	212 (100)	212 (100)	212 (100)
Max Temperature –	Ambient °F (°C)	140 (60)	140 (60)	120 (49)	120 (49)



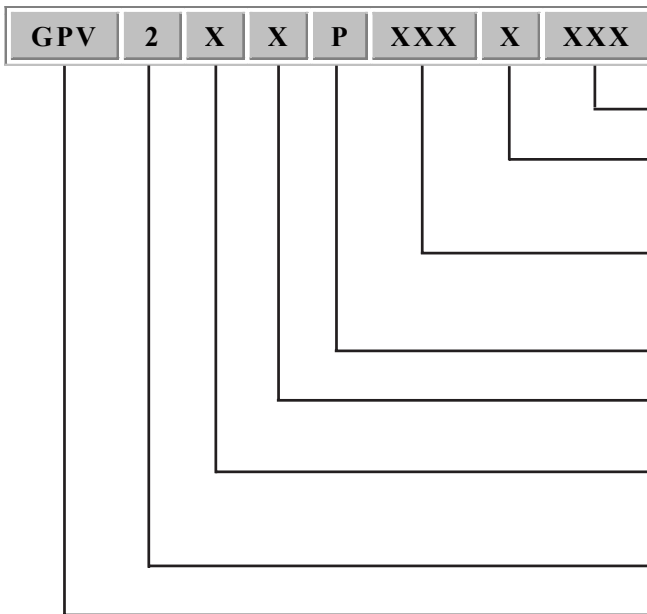
BODY	PVC	POLY	PVDF
PISTON	PVC	POLY	PVDF
END CAP	PVC	POLY	PVDF

SIZE	A	B	C	D	E	PORT A	PORT B
1/4"	2.44	2.25	1.52	1.00	1.81	1/4 FNPT	1/4 FNPT
1/2"	2.78	2.75	1.69	0.96	2.00	1/2 FNPT	1/2 FNPT
3/4"	3.66	3.00	2.28	1.33	2.50	3/4 FNPT	3/4 FNPT
1"	4.43	4.00	3.83	1.69	3.44	1 FNPT	1 FNPT

Specifications subject to change without notice.

All dimensions are in inches.

ORDERING INFORMATION



OPTIONS: ### - Non-Standard Options (Consult Factory)

SEALS:
 V - Viton®
 E - Ethylene Propylene
 K - Kalrez®

BODY MATERIAL:
 PVC - PVC
 POL - Polypropylene
 PVD - PVDF

CONNECTION: FNPT

ORIFICE & PORT:
 4 - 1/4" 8 - 1/2"
 12 - 3/4" 16 - 1"

VALVE CONFIGURATION:
 C - Normally Closed
 O - Normally Open

2 WAY

GENERAL PURPOSE PNEUMATIC VALVE SERIES

® Viton and Kalrez are registered trademarks of the Dupont Corporation.

LS-DGPV01-01

DYTEC
 CORPORATION

102 Compass Point Dr., Suite D
 St. Charles, MO 63301
 636-949-5600 Fax: 636-724-2492
 www.dytec.com