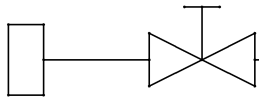
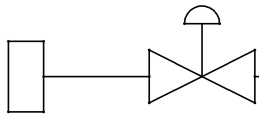


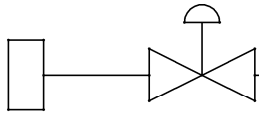
CHEM SUPPLY
3/4" FLARED
FITTING)



DI SUPPLY
1/2" FLARED
FITTING)



N2 SUPPLY
1/4" FLARED
FITTING)

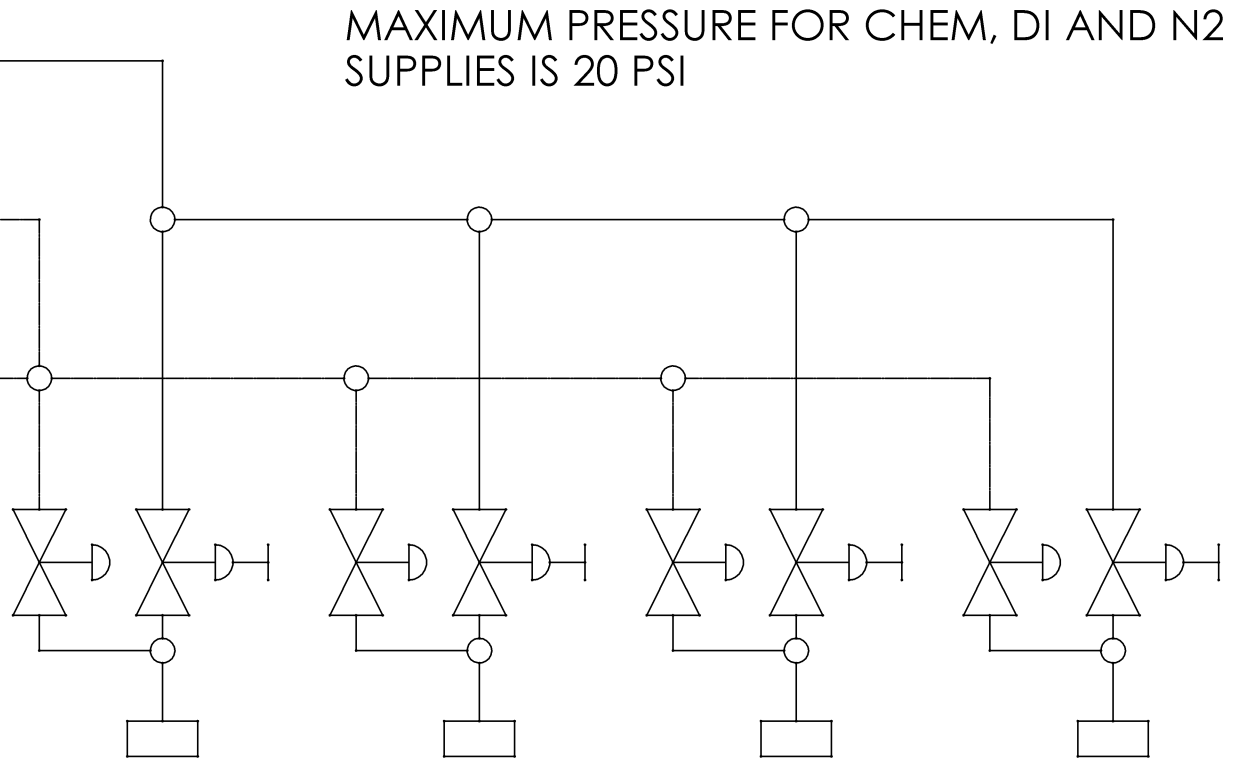


MAXIMUM PRESSURE FOR CHEM, DI AND N2
SUPPLIES IS 20 PSI

 MANUAL SHUTOFF

 PNEUMATIC VALVE

 PNEUMATIC VALVE WITH
MANUAL SHUTOFF



CHEM OUT 1

CHEM OUT 2

CHEM OUT 3

CHEM OUT 4

(ALL CHEM OUT ARE 1/2" FLARED FITTINGS)