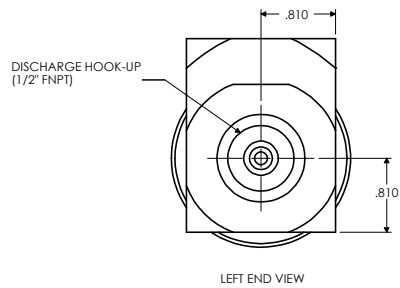
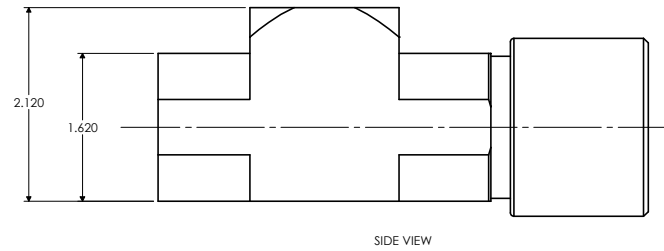


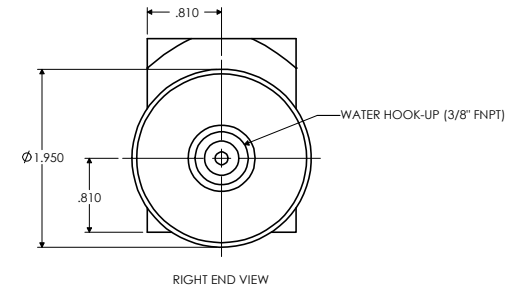
ISOMETRIC VIEW



LEFT END VIEW



SIDE VIEW



RIGHT END VIEW

SPECIFICATIONS	
DILUTION RATIO	2:1 TO 20:1
VACUUM RATING - MIN/MAX INCHES OF HG	21/27
CITY WATER PRESSURE - MIN/MAX PSIG (kPa)	30/60 (207/414)
MAX TEMPERATURE - MEDIA ° F ( ° C)	302 (150)
MAX TEMPERATURE - AMBIENT ° F ( ° C)	212 (100)

PART	MATERIAL
BODY	PTFE
PISTON	PTFE
FITTING	PVDF
O-RINGS	VITON
SPRING	TEFLON COATED 302 SS

O-RINGS	QTY
AS568A-016	3
AS568A-022	1
AS568A-026	1

TOLERANCES UNLESS OTHERWISE SPECIFIED	<b>DYTEC</b>		102 COMPASS PT. DR. STE. D. ST. CHARLES, MO. 63301-4414 (636) 949-5600			
	WDV-XX08P-TFE-V VALVE PHYSICAL DIMENSIONS					
	APPROVAL		DWN BY: MPJ	DATE 07/11/02	SCALE 1=1	CARD BY:
ALL DIMENSIONS ARE IN INCHES		ENG: GA	DATE	SHEET 1 OF 1	44	0002387
PATH: E:\CC\DYTEC\WDV-XX08P-TFE-VF.SLDDRW					30	00