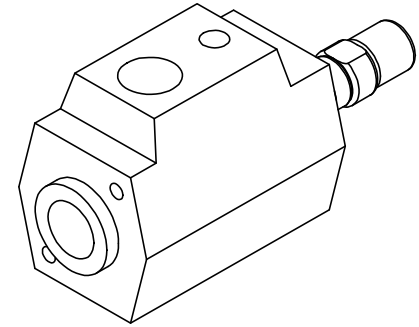
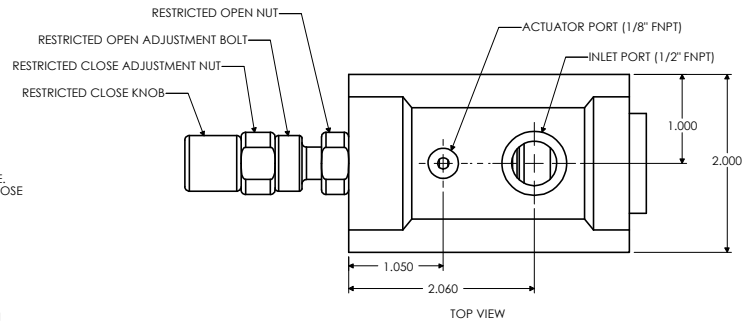
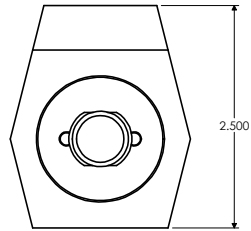


SETTING OF RESTRICTED CLOSE VALVE
 1. TURN RESTRICTED CLOSE KNOB COUNTERCLOCKWISE TO UNLOCK RESTRICTED CLOSE ADJUSTMENT NUT.
 2. TURN RESTRICTED CLOSE ADJUSTMENT NUT CLOCKWISE TO FURTHER RESTRICT THE CLOSE POSITION OF THE VALVE. TURN RESTRICTED CLOSE ADJUSTMENT NUT COUNTERCLOCKWISE TO CLOSE THE VALVE.
 3. TURN RESTRICTED CLOSE KNOB CLOCKWISE TO LOCK RESTRICTED CLOSE POSITION.

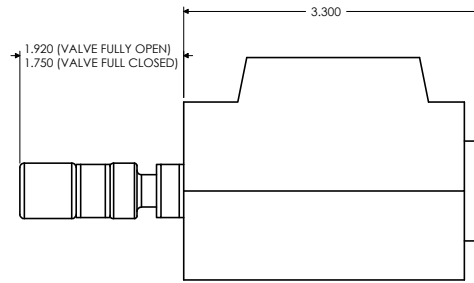
SETTING OF RESTRICTED OPEN VALVE
 1. TURN RESTRICTED OPEN NUT COUNTERCLOCKWISE TO UNLOCK THE RESTRICTED OPEN ADJUSTMENT BOLT.
 2. TURN RESTRICTED OPEN ADJUSTMENT BOLT CLOCKWISE TO FURTHER RESTRICT THE OPEN POSITION OF THE VALVE. TURN RESTRICTED OPEN ADJUSTMENT BOLT COUNTERCLOCKWISE TO OPEN THE VALVE.
 3. TURN RESTRICTED OPEN NUT CLOCKWISE TO LOCK THE RESTRICTED OPEN POSITION.



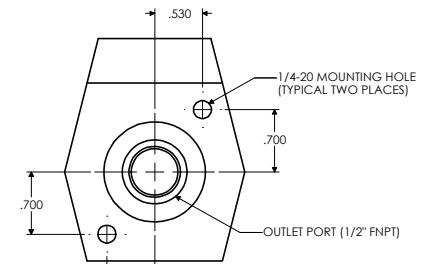
ISOMETRIC VIEW



LEFT END VIEW



SIDE VIEW



RIGHT END VIEW

PART	MATERIAL
BODY	PTFE
BELLOWS	PTFE
BACKING PLATE	PTFE
PISTON	PVDF
END CAP	POLYPROPYLENE
SPRING	TEFLON COATED, 302 S.S.
O-RINGS	VITON
ADJUSTMENT ROD	316 STAINLESS STEEL
INTERNAL NUT	316 STAINLESS STEEL
RESTRICTED OPEN NUT	POLYPROPYLENE
RESTRICTED OPEN ADJUSTMENT BOLT	POLYPROPYLENE
RESTRICTED CLOSE ADJUSTMENT NUT	POLYPROPYLENE
RESTRICTED CLOSE KNOB	POLYPROPYLENE

O-RINGS	QTY
AS568A-011	1
AS568A-025	2
AS568A-210	1

SPECIFICATIONS	
Cv	2.8
MAX PRESSURE - INLET PORT PSIG (kPA)	75 (517)
MAX PRESSURE - OUTLET PORT PSIG (kPA)	40 (276)
ACTUATOR PRESSURE - MIN/MAX PSIG (kPA)	50/80 (345/552)
MAX TEMPERATURE - MEDIA °F (°C)	350 (177)
MAX TEMPERATURE - AMBIENT °F (°C)	140 (60)

TOLERANCES UNLESS OTHERWISE SPECIFIED	DYTEC		102 COMPASS PT. DR. STE. D. ST. CHARLES, MO. 63301-4414 (636) 949-5600							
			TPV-2C8P-TFE-V-RB VALVE PHYSICAL DIMENSIONS							
APPROVAL	ENGR	DATE	DWGN BY	MPJ	DATE	07/16/02	SCALE	1=1	CHKD BY	
ALL DIMENSIONS ARE IN INCHES	GA	DATE	SHEET	1 OF 1	44	0002399	30	00		
PATH H:\CC\DYTEC\TPV-2C8P-TFE-V-RB.SLDDRW										