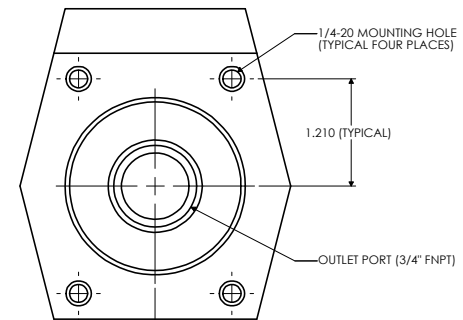
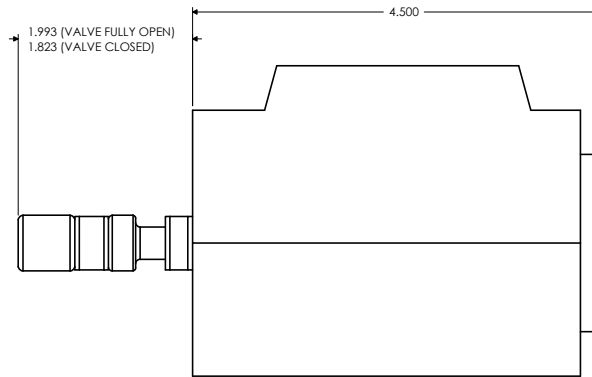
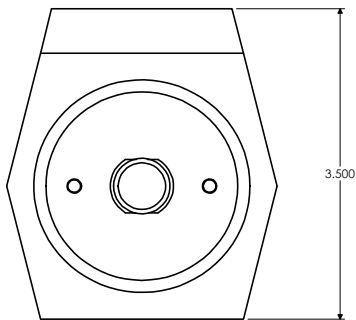
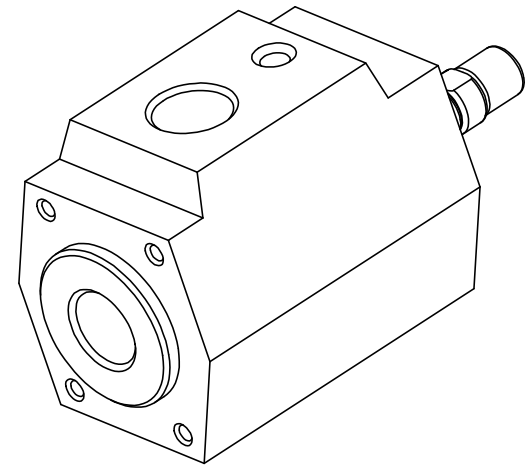
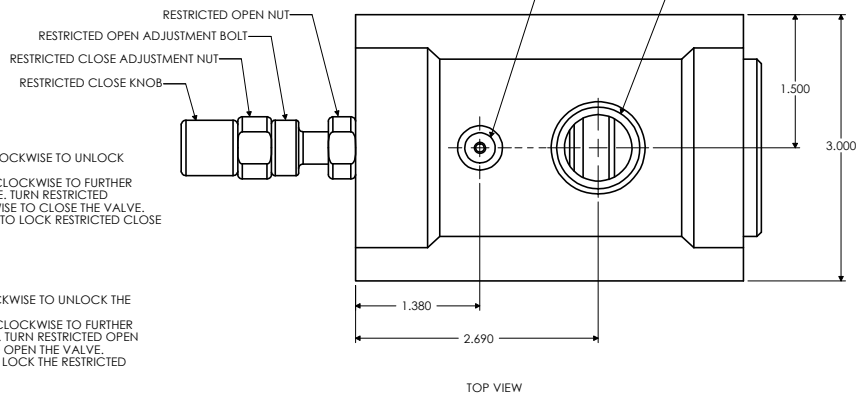


SETTING OF RESTRICTED CLOSE VALVE
 1. TURN RESTRICTED CLOSE KNOB COUNTERCLOCKWISE TO UNLOCK RESTRICTED CLOSE ADJUSTMENT NUT.
 2. TURN RESTRICTED CLOSE ADJUSTMENT NUT CLOCKWISE TO FURTHER RESTRICT THE CLOSE POSITION OF THE VALVE. TURN RESTRICTED CLOSE ADJUSTMENT NUT COUNTERCLOCKWISE TO CLOSE THE VALVE.
 3. TURN RESTRICTED CLOSE KNOB CLOCKWISE TO LOCK RESTRICTED CLOSE POSITION.

SETTING OF RESTRICTED OPEN VALVE
 1. TURN RESTRICTED OPEN NUT COUNTERCLOCKWISE TO UNLOCK THE RESTRICTED OPEN ADJUSTMENT BOLT.
 2. TURN RESTRICTED OPEN ADJUSTMENT BOLT CLOCKWISE TO FURTHER RESTRICT THE OPEN POSITION OF THE VALVE. TURN RESTRICTED OPEN ADJUSTMENT BOLT COUNTERCLOCKWISE TO OPEN THE VALVE.
 3. TURN RESTRICTED OPEN NUT CLOCKWISE TO LOCK THE RESTRICTED OPEN POSITION.



LEFT END VIEW

SIDE VIEW

RIGHT END VIEW

PART	MATERIAL
BODY	PTFE
BELLOWS	PTFE
BACKING PLATE	PTFE
PISTON	PTFE
END CAP	POLYPROPYLENE
SPRING	TEFLON COATED 302 STAINLESS STEEL
O-RINGS	VITON
ADJUSTMENT ROD	316 STAINLESS STEEL
INTERNAL NUT	316 STAINLESS STEEL
RESTRICTED OPEN NUT	POLYPROPYLENE
RESTRICTED OPEN ADJUSTMENT BOLT	POLYPROPYLENE
RESTRICTED CLOSE ADJUSTMENT NUT	POLYPROPYLENE
RESTRICTED CLOSE KNOB	POLYPROPYLENE

SPECIFICATIONS	
Cv	7.5
MAX PRESSURE - INLET PORT PSIG (kPA)	60 (414)
MAX PRESSURE - OUTLET PORT PSIG (kPA)	10 (69)
ACTUATOR PRESSURE - MIN/MAX PSIG (kPA)	40/80 (276/552)
MAX TEMPERATURE - MEDIA °F (°C)	302 (150)
MAX TEMPERATURE - AMBIENT °F (°C)	140 (60)

O-RINGS	QTY
AS568A-112	1
AS568A-133	2
AS568A-218	1

TOLERANCES UNLESS OTHERWISE SPECIFIED:

ALL DIMENSIONS ARE IN INCHES	
ENG	DATE
GA	DATE
PATH = E:\CC\DYTEC\TPV-2C12P-RE-V-RCP.SLDDRW	

DYTEC 102 COMPASS PT. DR. STE. D.
 ST. CHARLES, MO. 63301-4414
 (636) 949-5600

TPV-2C12P-TFE-V-RB VALVE PHYSICAL DIMENSIONS

APPROVAL		OWN	MPJ	DATE	03/20/02	SCALE	1=1	CHKD
ENG	DATE	BY						BY
						44	0002348	30
1 of 1								00