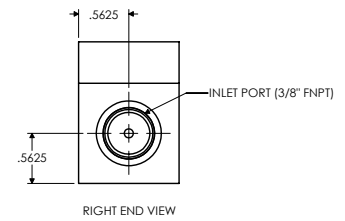
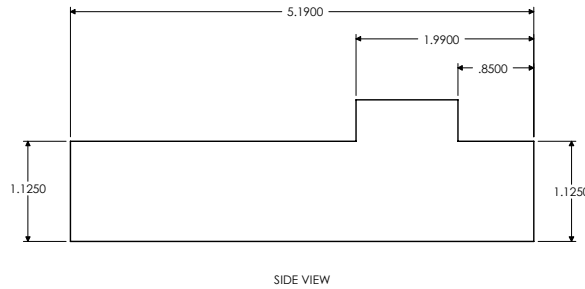
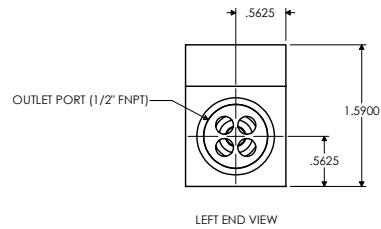
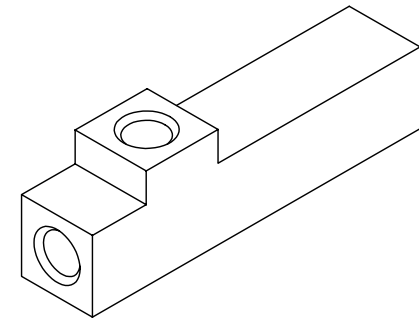
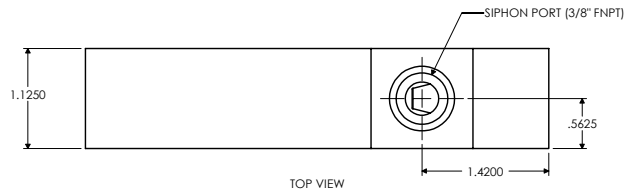


A B C D E

1



ASPIRATOR OPERATION NOTES  
 1. USER MUST BE CAUTIOUS OF POTENTIAL CHEMICAL REACTIONS.  
 2. VISCOSITY VARIATIONS IN FLUIDS BEING SIPHONED CAN CAUSE VARIATIONS IN PERFORMANCE.

SPECIFICATIONS	
VACUUM RATING - MIN/MAX INCHES OF Hg	5/18
DILUTION RATIO	1.25:1 TO 2.50:1
CITY WATER PRESSURE - MIN/MAX PSIG (kPa)	20/60 (138/414)
FLOW RATE - MIN/MAX GPM	1.0/4.0
MAX TEMPERATURE - MEDIA °F (°C)	302 (150)
MAX TEMPERATURE - AMBIENT °F (°C)	140 (60)

PART	MATERIAL
BODY	PTFE
DISK	PTFE
NOZZLE	PTFE

TOLERANCES UNLESS OTHERWISE SPECIFIED	<b>DYTEC</b>		102 COMPASS PT. DR. STE. D. ST. CHARLES, MO. 63301-4414 (636) 949-5600				
	ASL-0206P-TFE ASPIRATOR PHYSICAL DIMENSIONS						
	APPROVAL		DWN	IMP/1	DATE 02/17/03	SCALE 1=1	CRD
ALL DIMENSIONS ARE IN INCHES		ENG	DATE	SHEET			
PATH = E:\CC\DYTEC\ASL-0206P-TFE.PSLDDRW		GA	DATE	1 OF 1	44	0002419	30 00

4

A B C D E